

Appendix B from Chatelet et al., “The Evolution of Photosynthetic Anatomy in *Viburnum* (Adoxaceae)”
(Int. J. Plant Sci., vol. 174, no. 9, p. 1277)

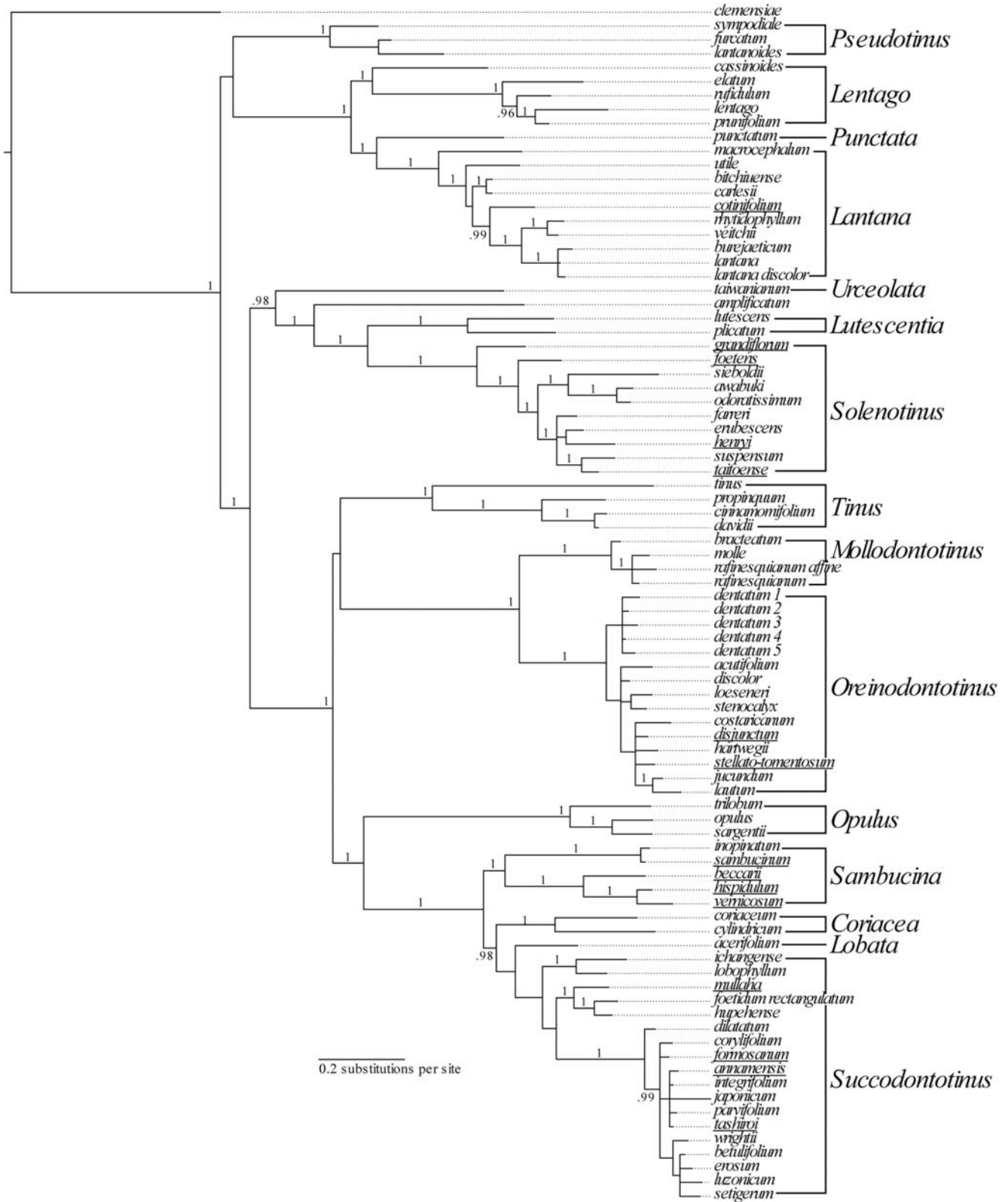


Fig. B1 Bayesian 50% majority-rule consensus tree with the following parameters: $-\ln L = 25,079.1453$; partition 1: base pair frequencies (bp freq) = 0.2785, 0.1793, 0.1990, 0.3433; rate matrix (rmat) = 0.2497, 0.2254, 0.0493, 0.1435, 0.1912, 0.1410; $\gamma = 0.0503$; proportion

Appendix B from Chatelet et al., *Viburnum* Photosynthetic Evolution

of invariable sites (I) = 0.8495; partition 2: bp freq = 0.3351, 0.1618, 0.1616, 0.3415; rmat = 0.2570, 0.1639, 0.0850, 0.0861, 0.1650, 0.2432; γ = 0.0453; partition 3: bp freq = 0.1853, 0.3188, 0.2906, 0.2050; rmat = 0.0658, 0.2063, 0.0377, 0.0331, 0.6045, 0.0526; γ = 0.2178. Posterior probabilities (>0.95) are indicated above the branches, and species new to the study of *Viburnum* are underlined.